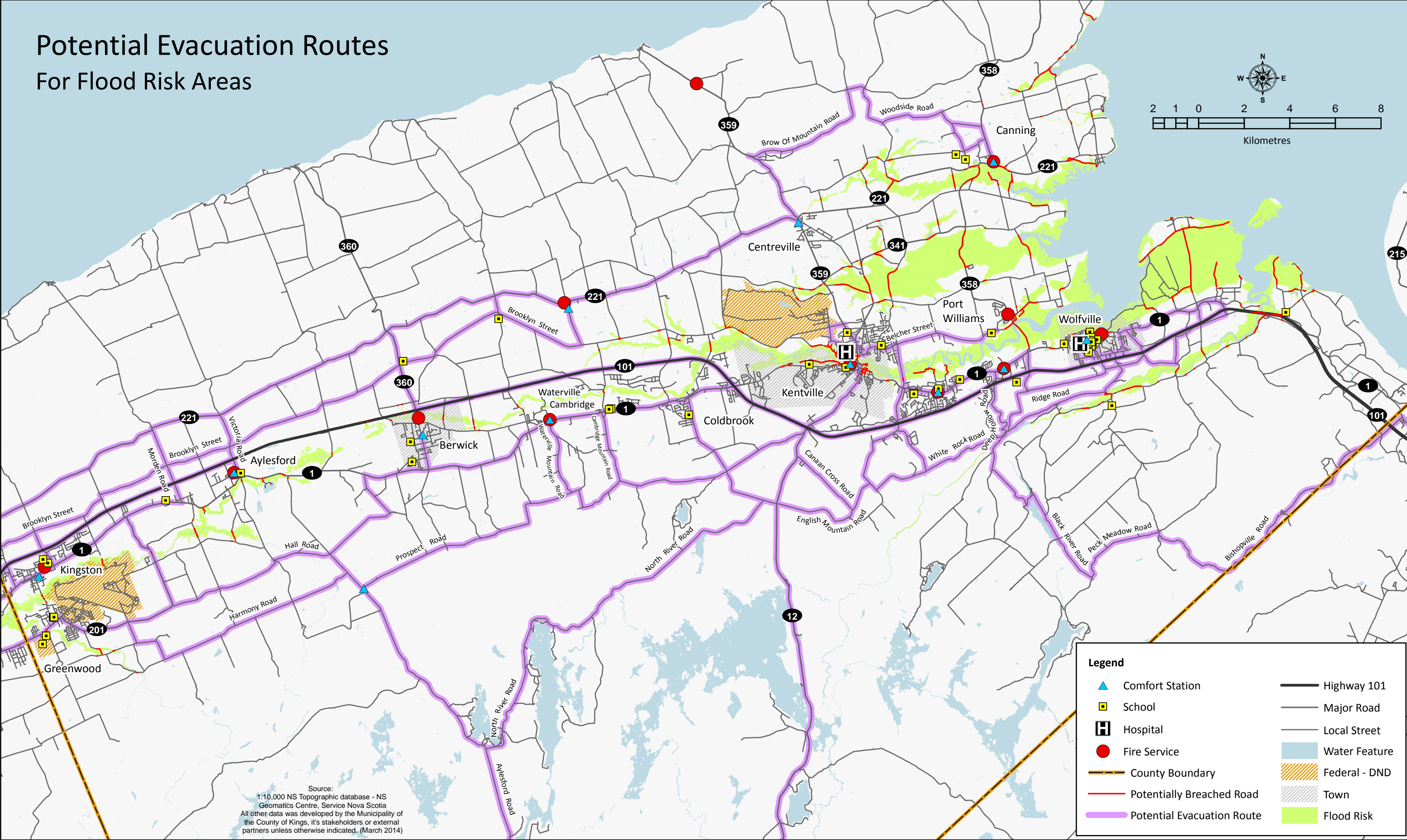


Potential Evacuation Routes For Flood Risk Areas

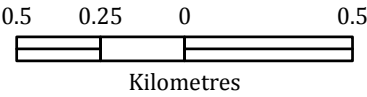
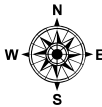


Kings County Floodplain Surge Risk Areas

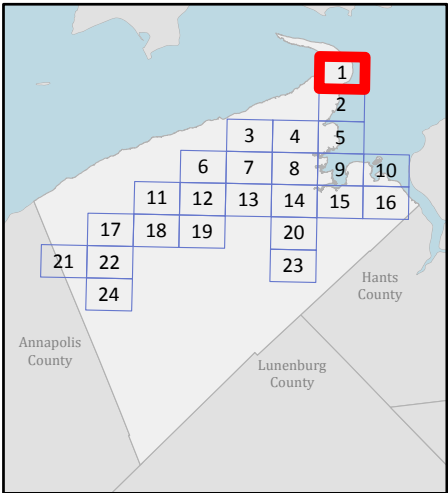
Map 1

Legend

- Highway
- Major / Minor Road
- Airstrip
- Map Index
- General Service Area (911) Boundary
- Floodplain Surge
- Federal Land or Town



Source: 1:10,000 digital planimetric files, NS Property Records Database - Service Nova Scotia.
All other data was developed by the Municipality of the County of Kings, it's stakeholders or external partners unless otherwise indicated.
July 2013.

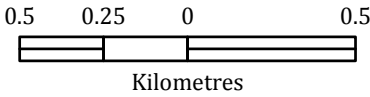
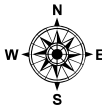


Kings County Floodplain Surge Risk Areas

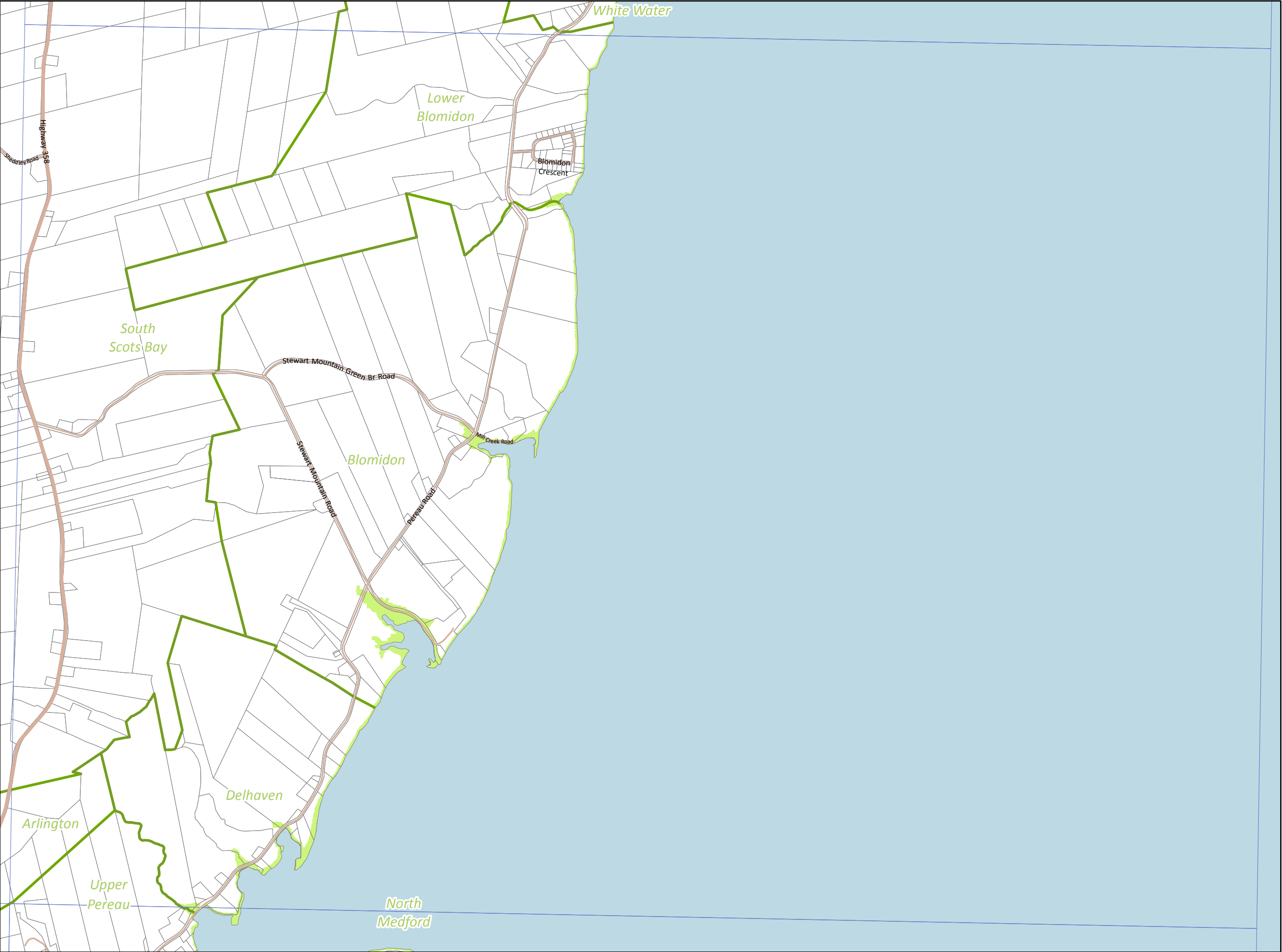
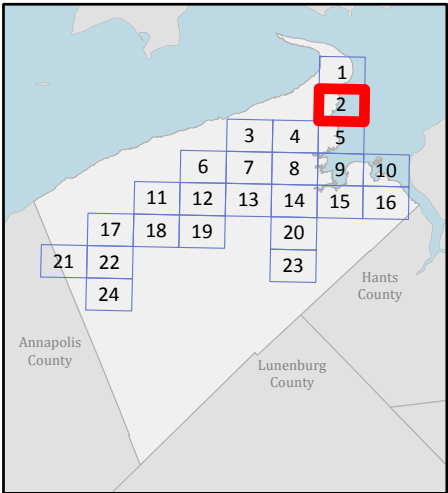
Map 2

Legend

- Highway
- Major / Minor Road
- Airstrip
- Map Index
- General Service Area (911) Boundary
- Floodplain Surge
- Federal Land or Town



Source: 1:10,000 digital planimetric files, NS Property Records Database - Service Nova Scotia.
All other data was developed by the Municipality of the County of Kings, it's stakeholders or external partners unless otherwise indicated.
July 2013.

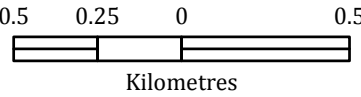
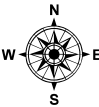


Kings County Floodplain Surge Risk Areas

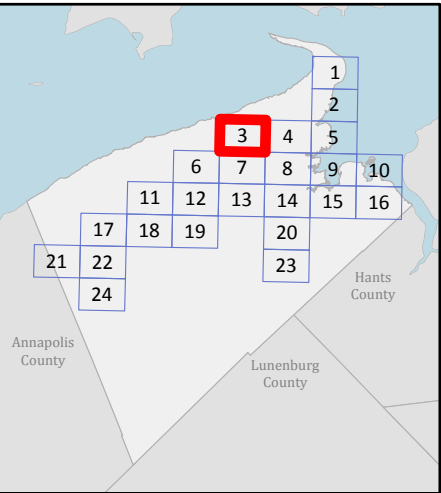
Map 3

Legend

- Highway
- Major / Minor Road
- Airstrip
- Map Index
- General Service Area (911) Boundary
- Floodplain Surge
- Federal Land or Town



Source: 1:10,000 digital planimetric files, NS Property Records Database - Service Nova Scotia.
All other data was developed by the Municipality of the County of Kings, it's stakeholders or external partners unless otherwise indicated.
July 2013.

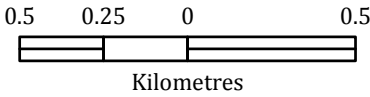
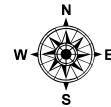


Kings County Floodplain Surge Risk Areas

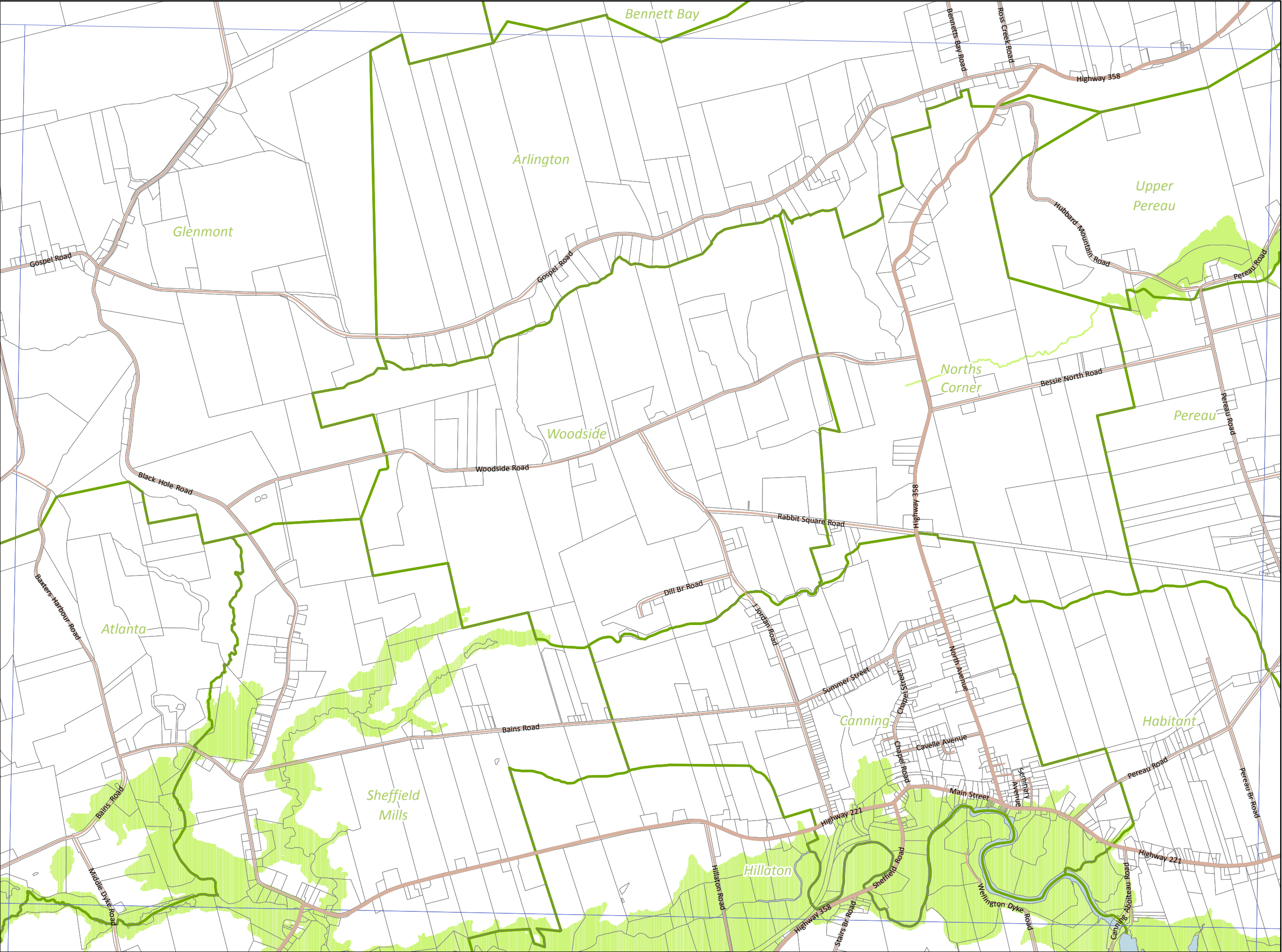
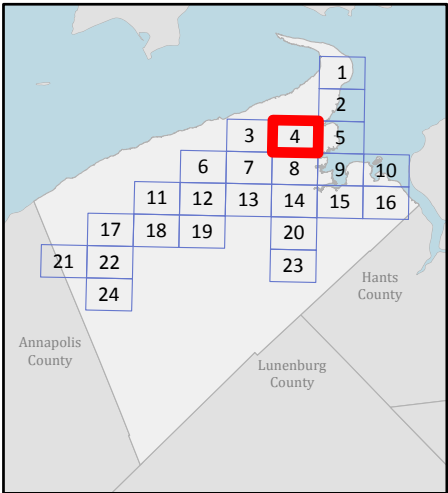
Map 4

Legend

- Highway
- Major / Minor Road
- Airstrip
- Map Index
- General Service Area (911) Boundary
- Floodplain Surge
- Federal Land or Town



Source: 1:10,000 digital planimetric files, NS Property Records Database - Service Nova Scotia.
All other data was developed by the Municipality of the County of Kings, it's stakeholders or external partners unless otherwise indicated.
July 2013.





Kings County Floodplain Surge Risk Areas

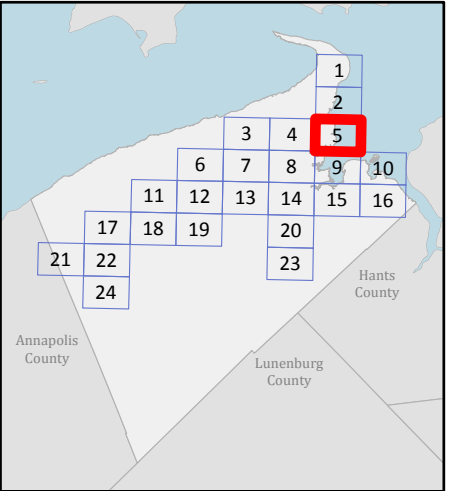
Map 5

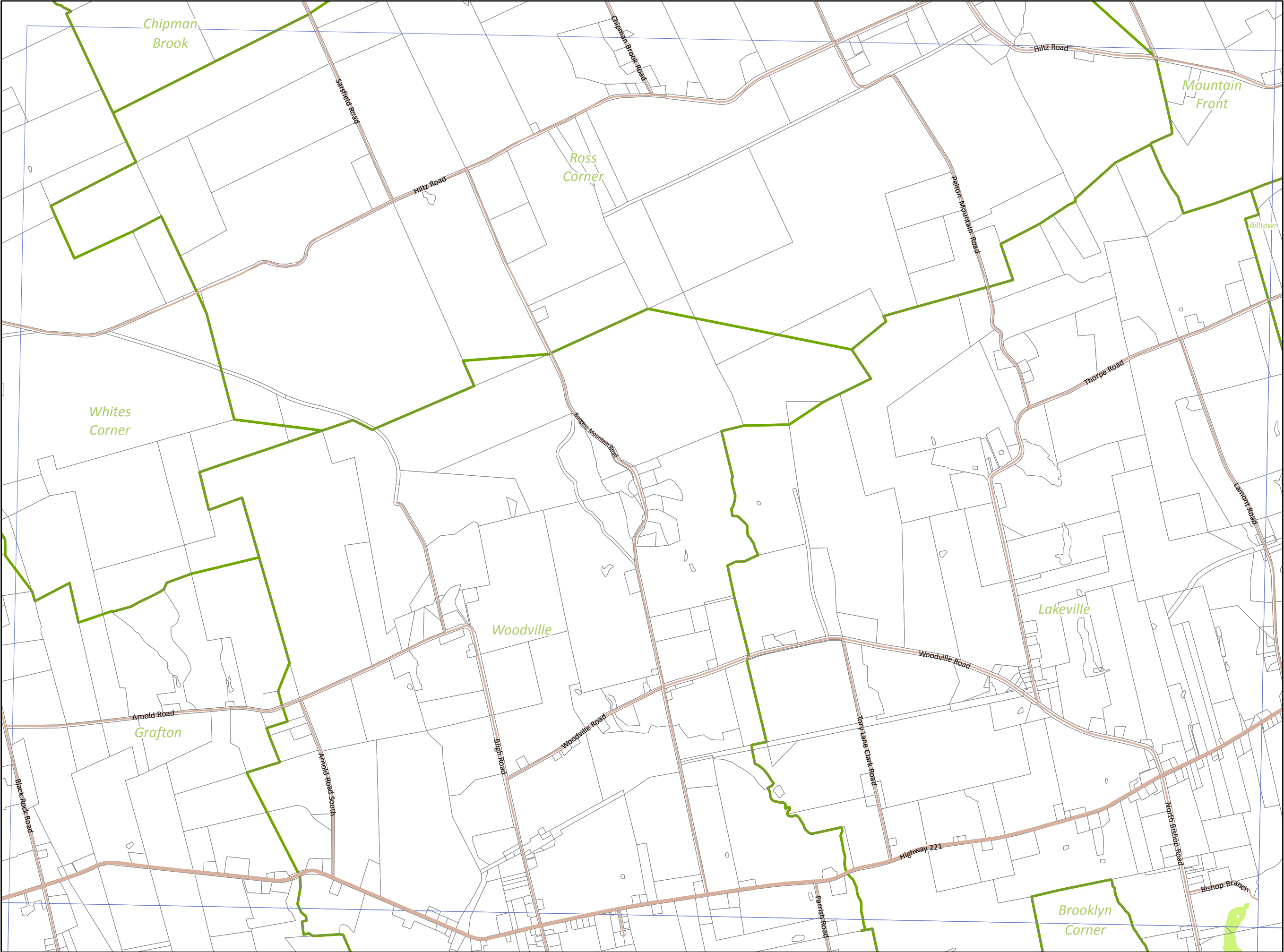
Legend

- Highway
- Major / Minor Road
- Airstrip
- Map Index
- General Service Area (911) Boundary
- Floodplain Surge
- Federal Land or Town

Source: 1:10,000 digital planimetric files, NS Property Records Database - Service Nova Scotia.
All other data was developed by the Municipality of the County of Kings, it's stakeholders or external partners unless otherwise indicated.
July 2013.

Page 5 of 24





Kings County Floodplain Surge Risk Areas

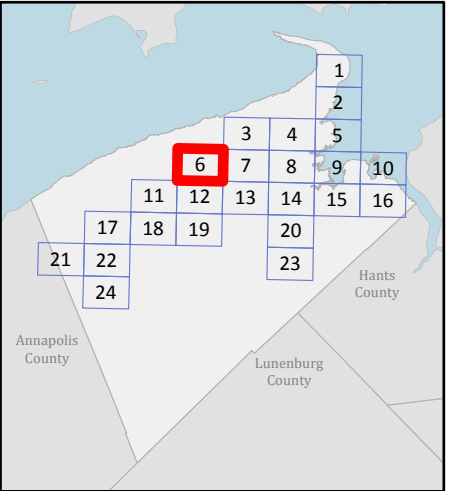
Map 6

Legend

- Highway
- Major / Minor Road
- Airstrip
- Map Index
- General Service Area (911) Boundary
- Floodplain Surge
- Federal Land or Town

Source: 1:10,000 digital planimetric files, NS Property Records Database - Service Nova Scotia.
All other data was developed by the Municipality of the County of Kings, it's stakeholders or external partners unless otherwise indicated.
July 2013.

Page 6 of 24

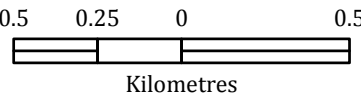
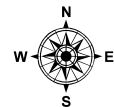


Kings County Floodplain Surge Risk Areas

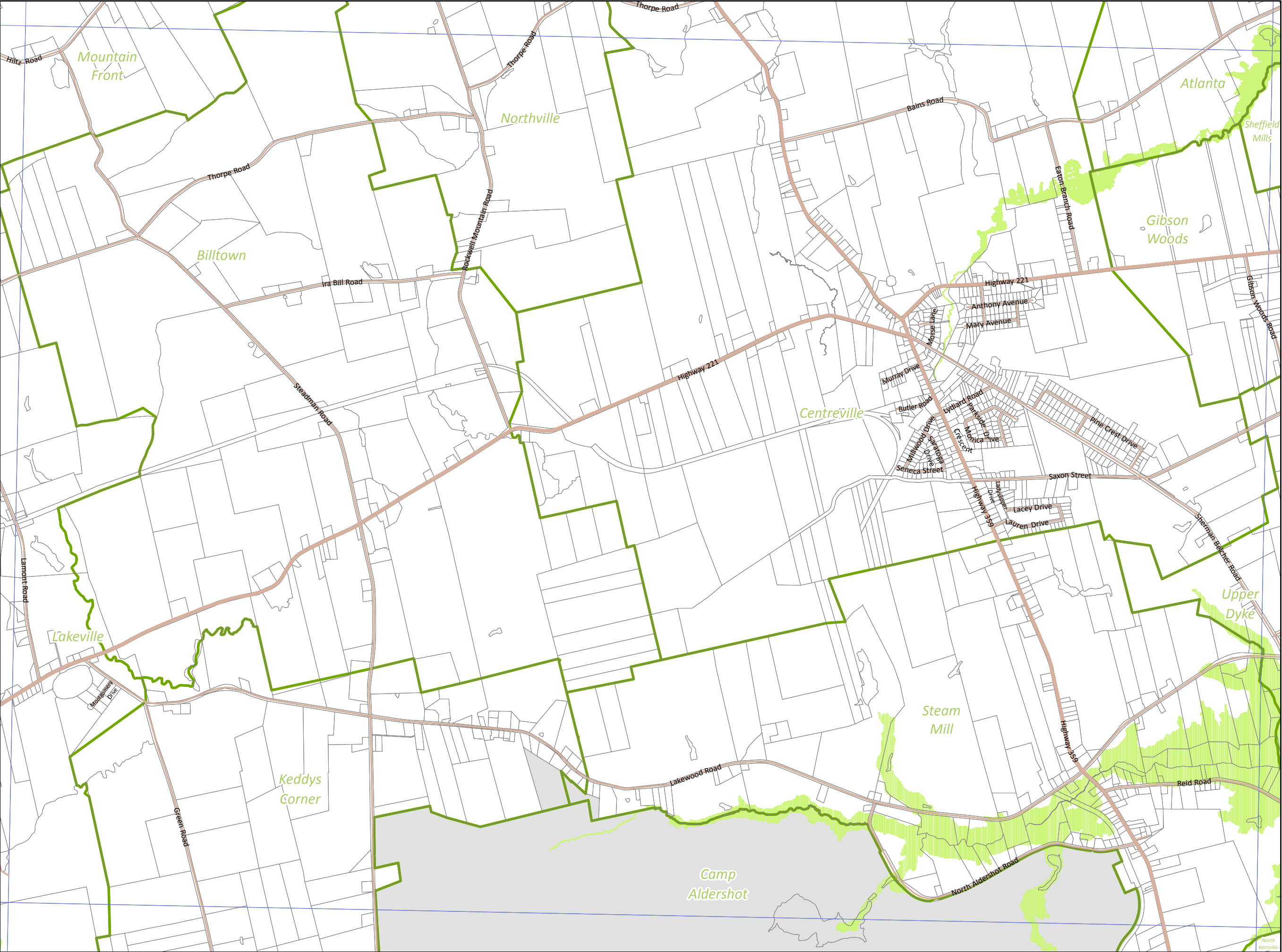
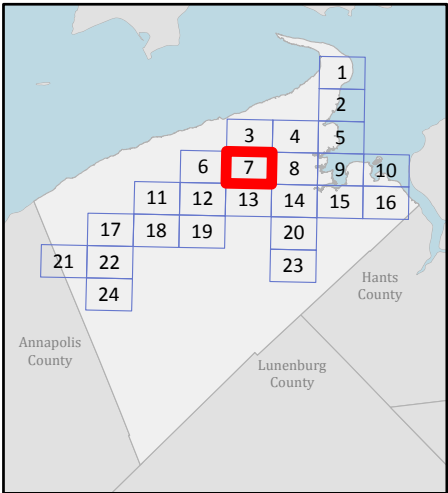
Map 7

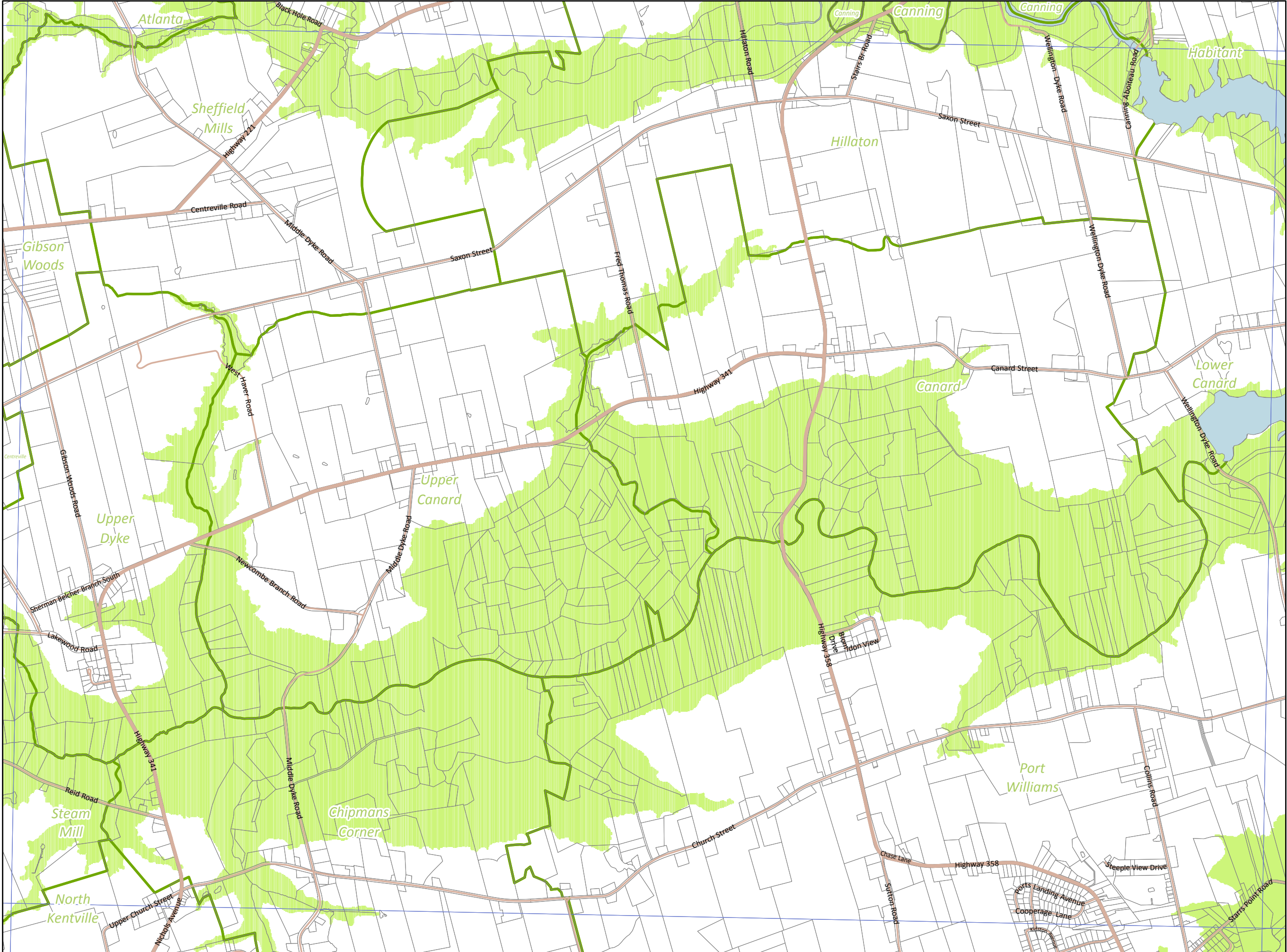
Legend

- Highway
- Major / Minor Road
- Airstrip
- Map Index
- General Service Area (911) Boundary
- Floodplain Surge
- Federal Land or Town



Source: 1:10,000 digital planimetric files, NS Property Records Database - Service Nova Scotia.
All other data was developed by the Municipality of the County of Kings, it's stakeholders or external partners unless otherwise indicated.
July 2013.





Kings County Floodplain Surge Risk Areas

Map 8

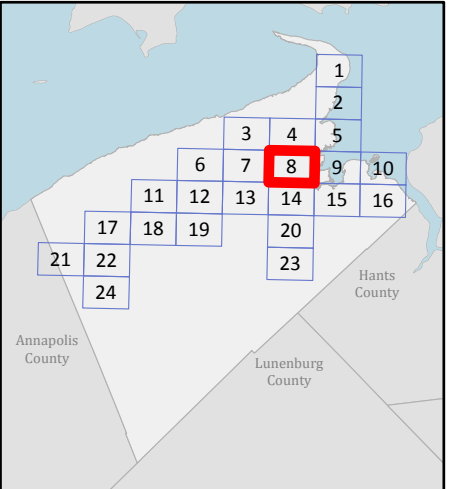
Legend

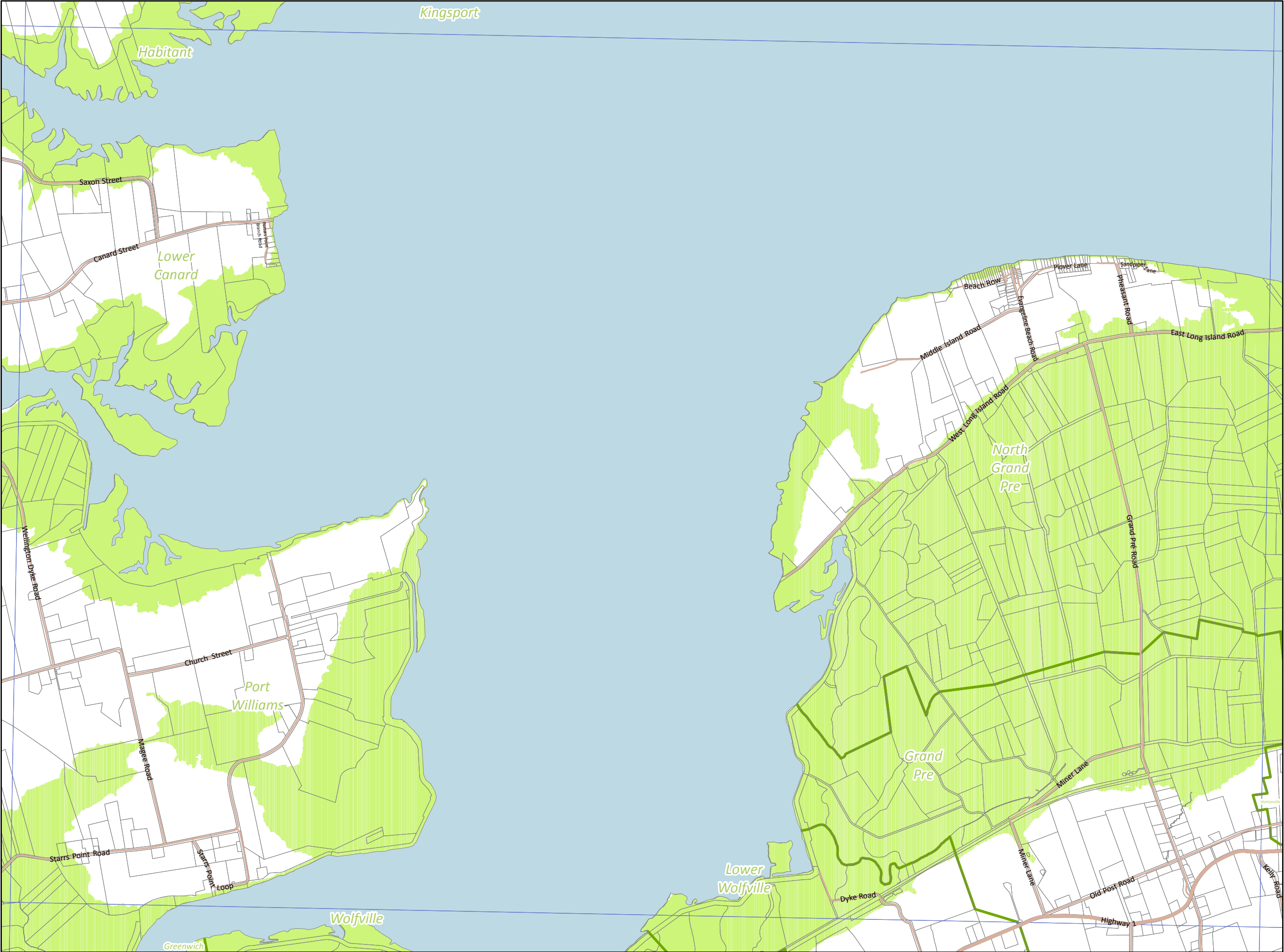
- Highway
- Major / Minor Road
- Airstrip
- Map Index
- General Service Area (911) Boundary
- Floodplain Surge
- Federal Land or Town

0.5 0.25 0 0.5
Kilometres

Source: 1:10,000 digital planimetric files, NS Property Records Database - Service Nova Scotia.
All other data was developed by the Municipality of the County of Kings, it's stakeholders or external partners unless otherwise indicated.
July 2013.

Page 8 of 24





Kings County Floodplain Surge Risk Areas

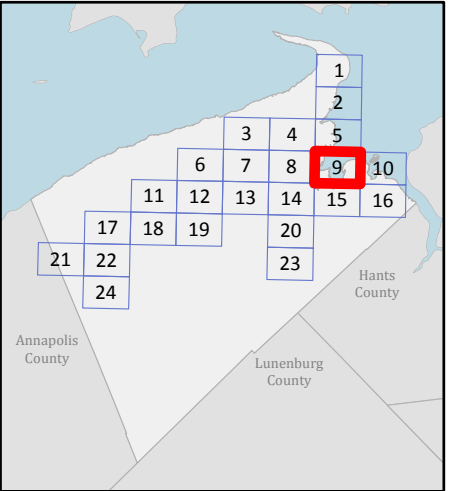
Map 9

Legend

- Highway
- Major / Minor Road
- Airstrip
- Map Index
- General Service Area (911) Boundary
- Floodplain Surge
- Federal Land or Town

Source: 1:10,000 digital planimetric files, NS Property Records Database - Service Nova Scotia.
All other data was developed by the Municipality of the County of Kings, it's stakeholders or external partners unless otherwise indicated.
July 2013.

Page 9 of 24

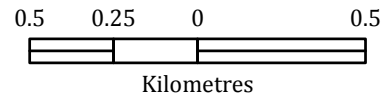
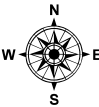


Kings County Floodplain Surge Risk Areas

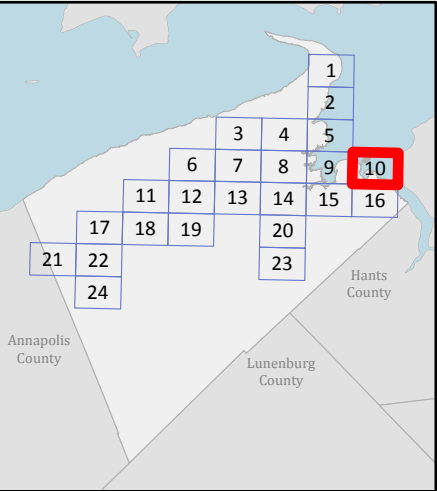
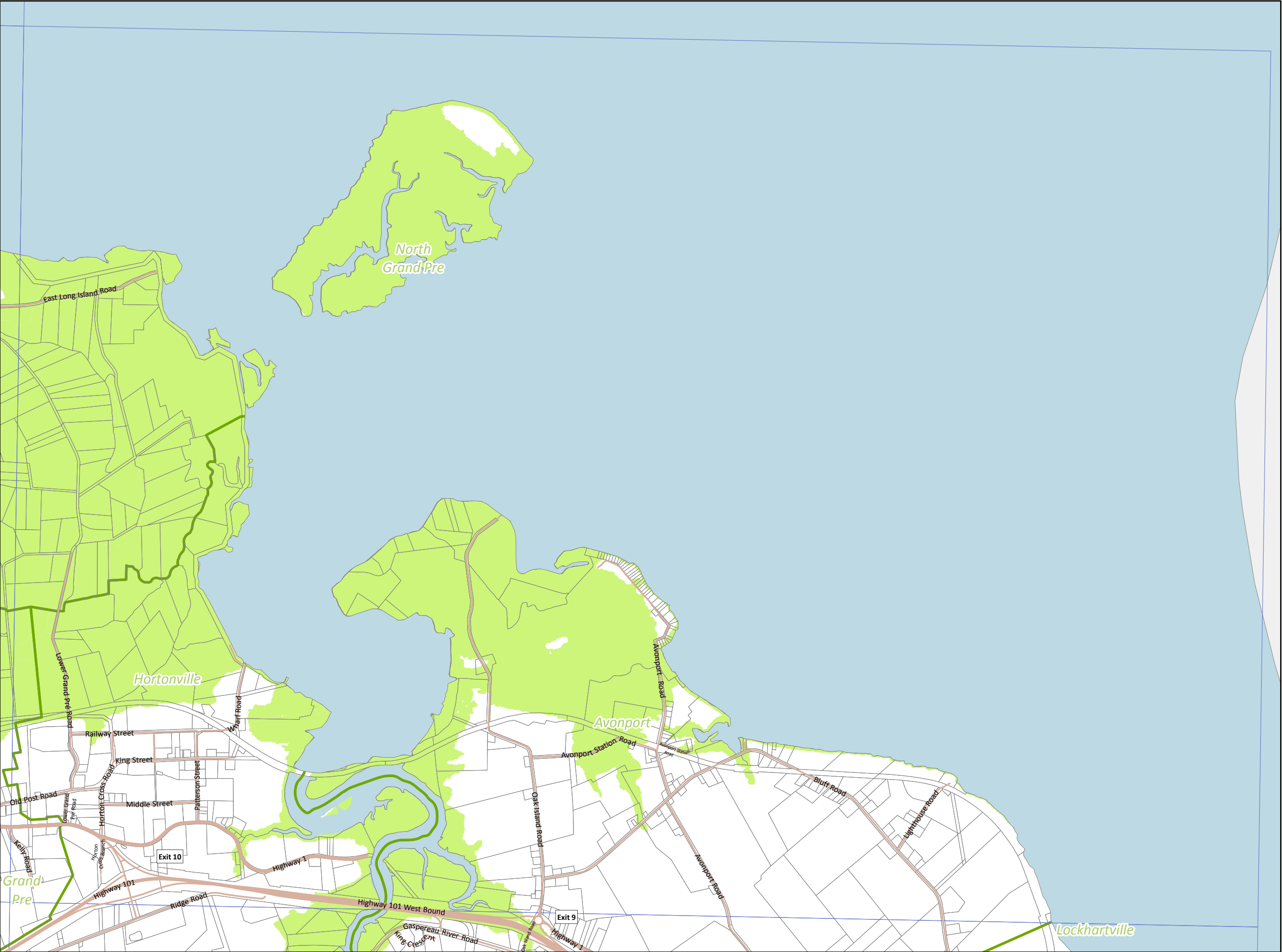
Map 10

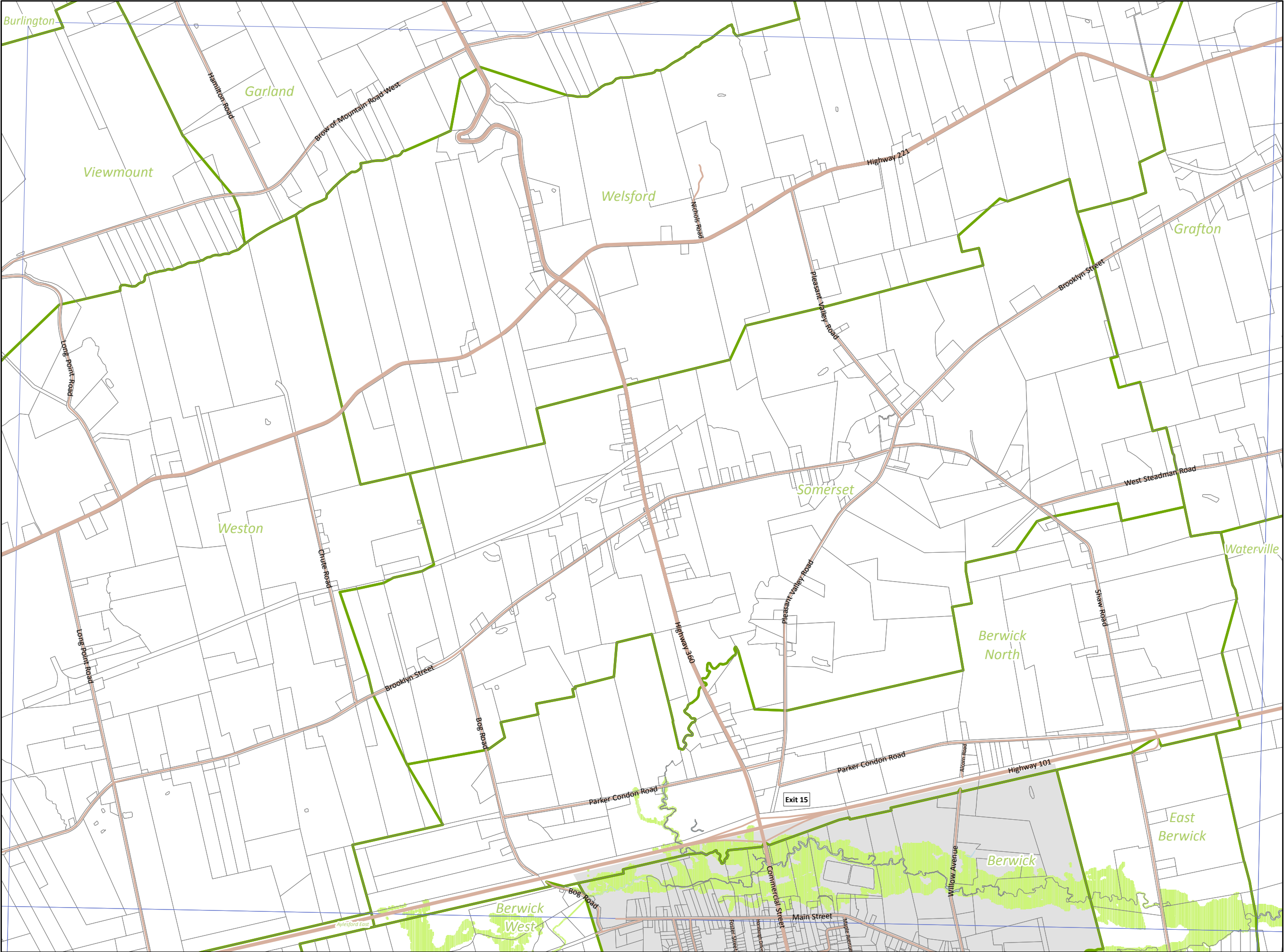
Legend

- Highway
- Major / Minor Road
- Airstrip
- Map Index
- General Service Area (911) Boundary
- Floodplain Surge
- Federal Land or Town



Source: 1:10,000 digital planimetric files, NS Property Records Database - Service Nova Scotia.
All other data was developed by the Municipality of the County of Kings, it's stakeholders or external partners unless otherwise indicated.
July 2013.





Kings County Floodplain Surge Risk Areas

Map 11

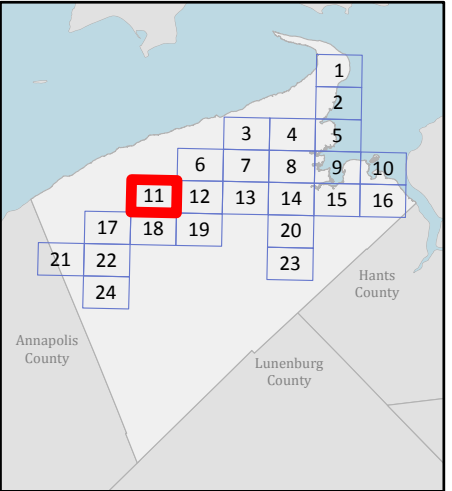
Legend

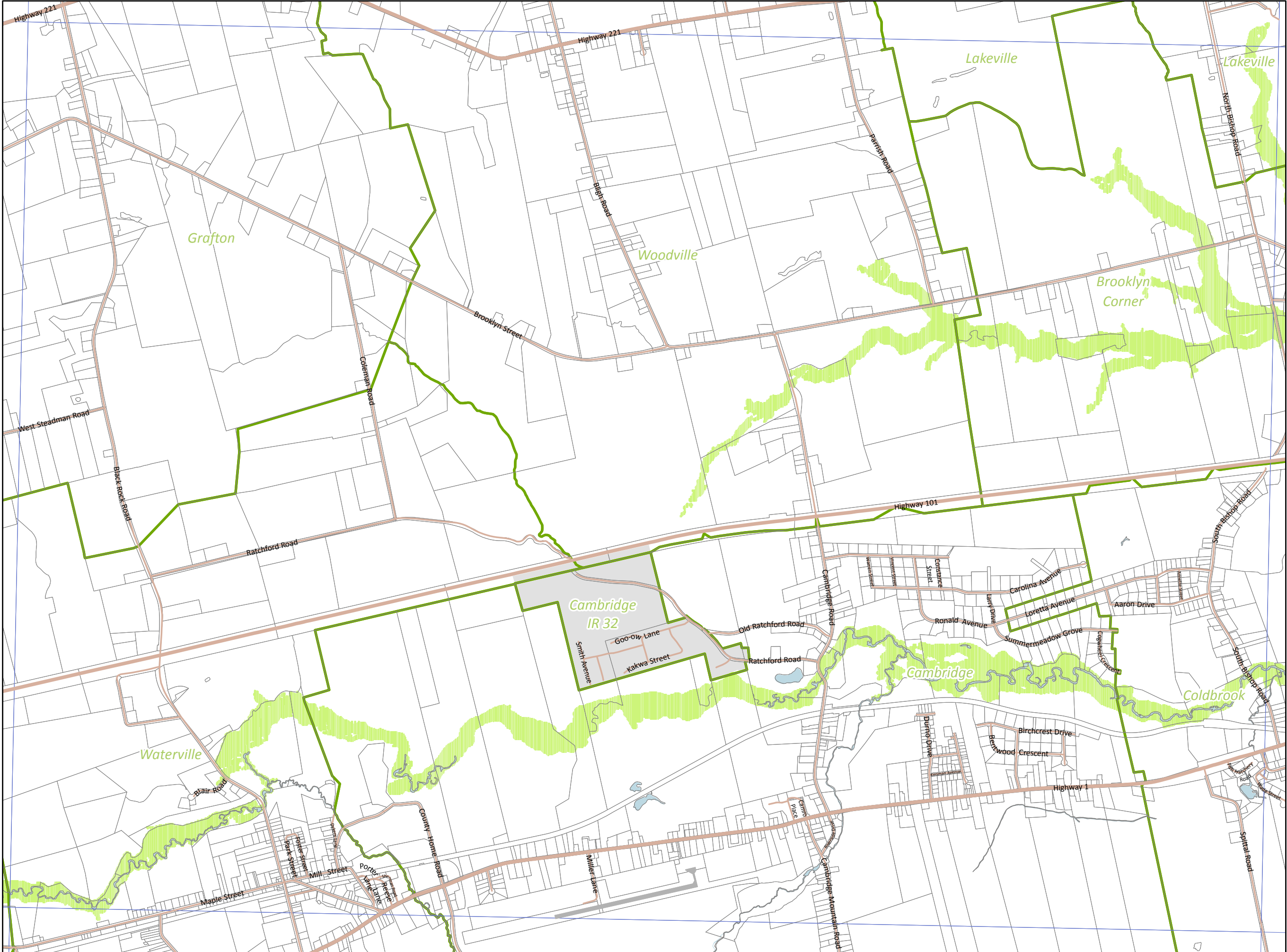
- Highway
- Major / Minor Road
- Airstrip
- Map Index
- General Service Area (911) Boundary
- Floodplain Surge
- Federal Land or Town

0.5 0.25 0 0.5
Kilometres

Source: 1:10,000 digital planimetric files, NS Property Records Database - Service Nova Scotia.
All other data was developed by the Municipality of the County of Kings, it's stakeholders or external partners unless otherwise indicated.
July 2013.

Page 11 of 24





Kings County Floodplain Surge Risk Areas

Map 12

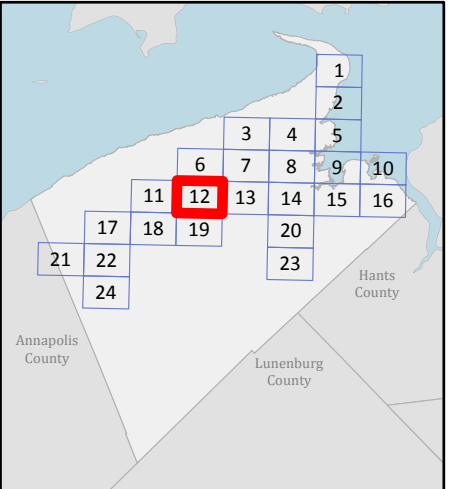
Legend

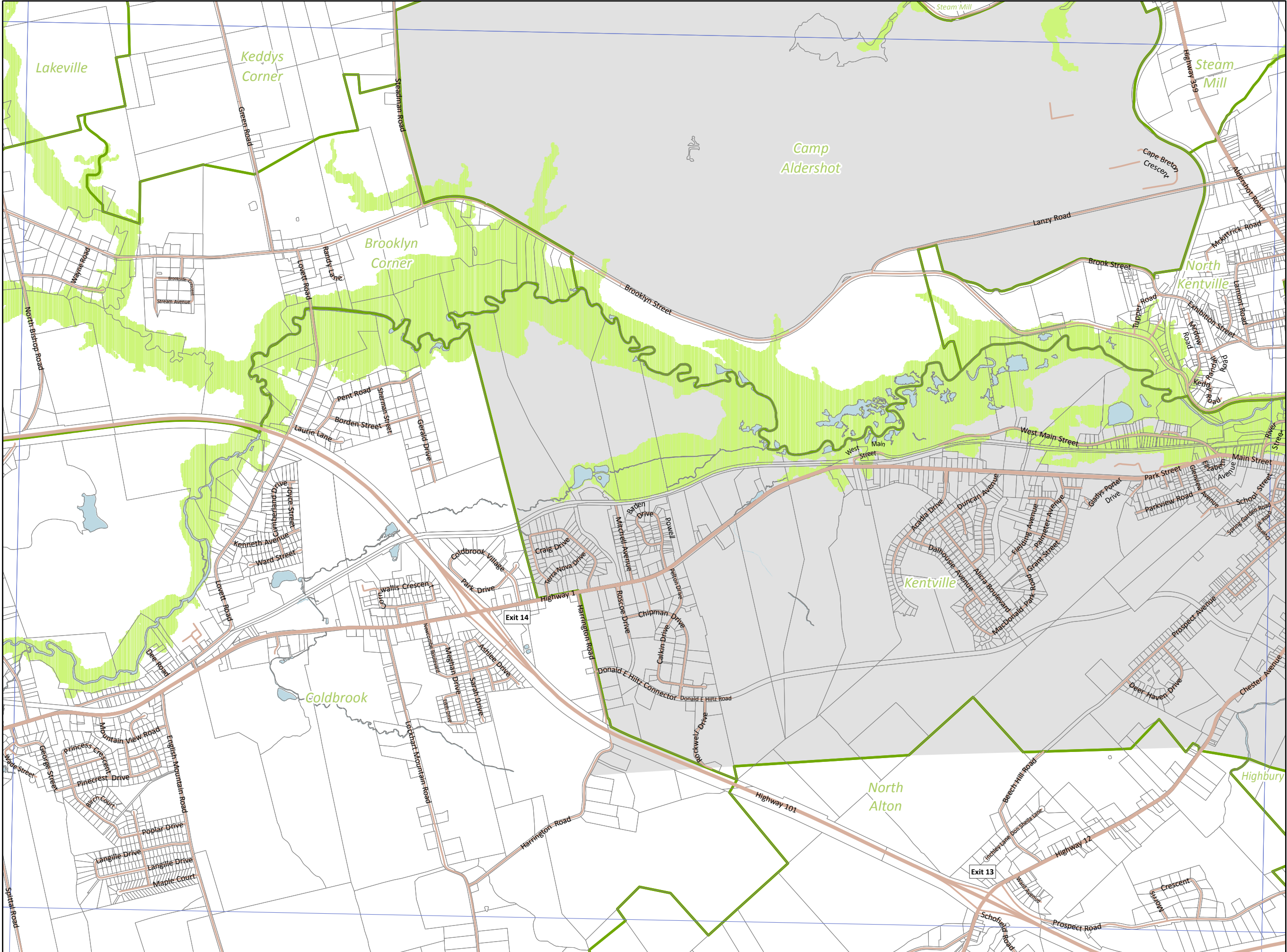
- Highway
- Major / Minor Road
- Airstrip
- Map Index
- General Service Area (911) Boundary
- Floodplain Surge
- Federal Land or Town

0.5 0.25 0 0.5
Kilometres

Source: 1:10,000 digital planimetric files, NS Property Records Database - Service Nova Scotia.
All other data was developed by the Municipality of the County of Kings, it's stakeholders or external partners unless otherwise indicated.
July 2013.

Page 12 of 24





Kings County Floodplain Surge Risk Areas

Map 13

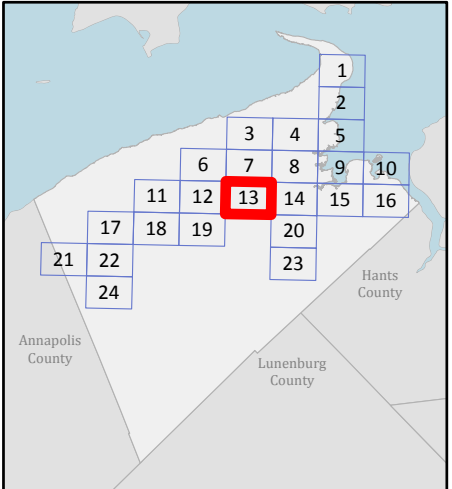
Legend

- Highway
- Major / Minor Road
- Airstrip
- Map Index
- General Service Area (911) Boundary
- Floodplain Surge
- Federal Land or Town

0.5 0.25 0 0.5
Kilometres

Source: 1:10,000 digital planimetric files, NS Property Records Database - Service Nova Scotia.
All other data was developed by the Municipality of the County of Kings, it's stakeholders or external partners unless otherwise indicated.
July 2013.

Page 13 of 24

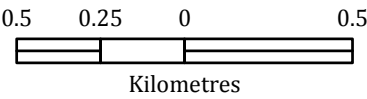
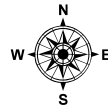


Kings County Floodplain Surge Risk Areas

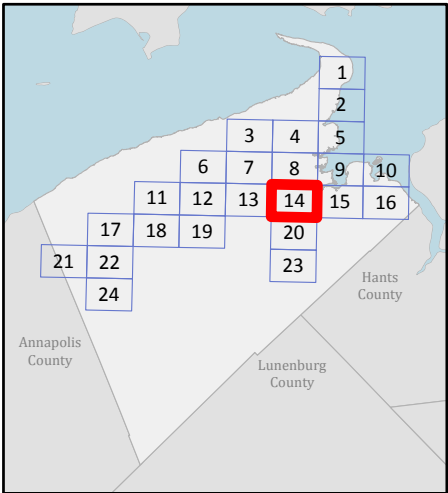
Map 14

Legend

- Highway
- Major / Minor Road
- Airstrip
- Map Index
- General Service Area (911) Boundary
- Floodplain Surge
- Federal Land or Town



Source: 1:10,000 digital planimetric files, NS Property Records Database - Service Nova Scotia.
All other data was developed by the Municipality of the County of Kings, it's stakeholders or external partners unless otherwise indicated.
July 2013.





Kings County Floodplain Surge Risk Areas

Map 15

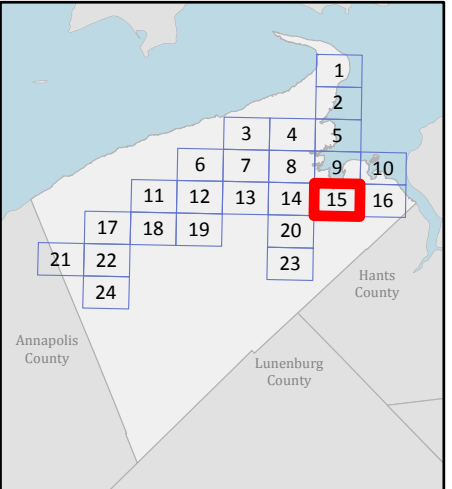
Legend

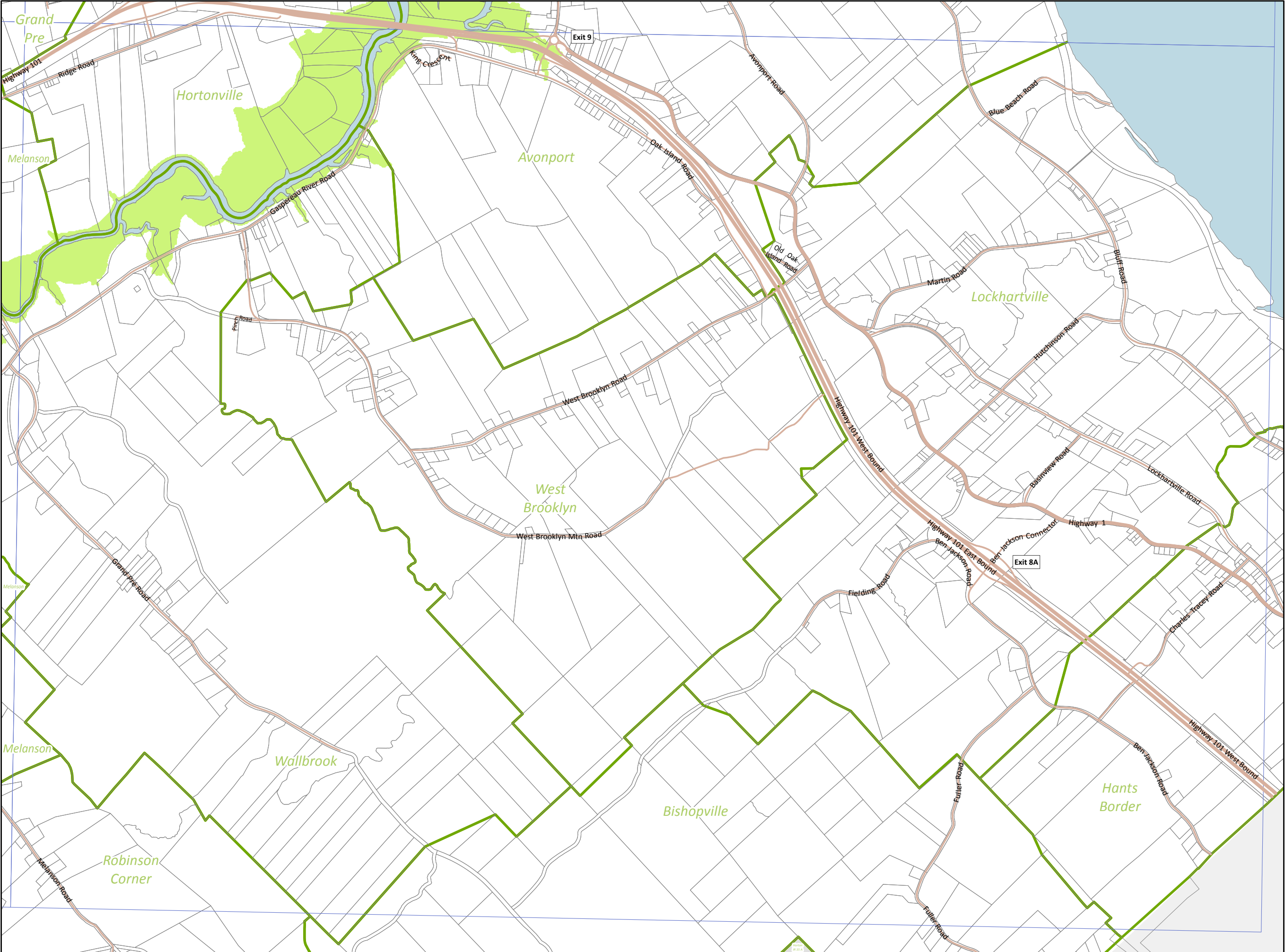
- Highway
- Major / Minor Road
- Airstrip
- Map Index
- General Service Area (911) Boundary
- Floodplain Surge
- Federal Land or Town

0.5 0.25 0 0.5
Kilometres

Source: 1:10,000 digital planimetric files, NS Property Records Database - Service Nova Scotia.
All other data was developed by the Municipality of the County of Kings, it's stakeholders or external partners unless otherwise indicated.
July 2013.

Page 15 of 24





Kings County Floodplain Surge Risk Areas

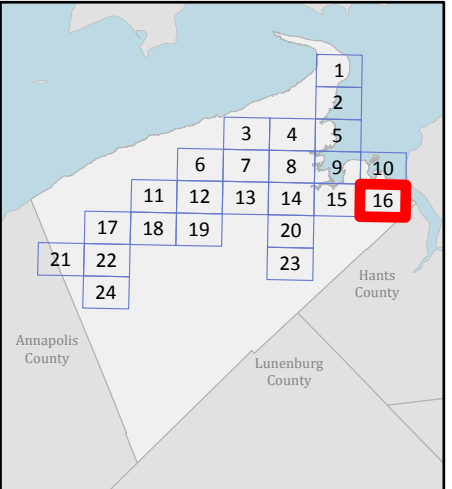
Map 16

Legend

- Highway
 - Major / Minor Road
- Airstrip
- Map Index
- General Service Area (911) Boundary
- Floodplain Surge
- Federal Land or Town

Source: 1:10,000 digital planimetric files, NS Property Records Database - Service Nova Scotia.
All other data was developed by the Municipality of the County of Kings, it's stakeholders or external partners unless otherwise indicated.
July 2013.

Page 16 of 24

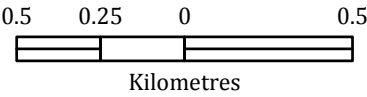
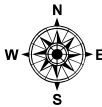


Kings County Floodplain Surge Risk Areas

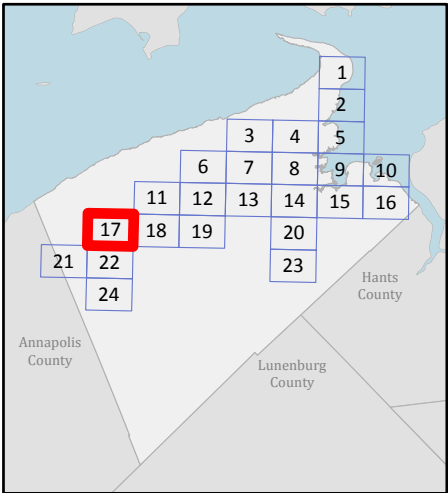
Map 17

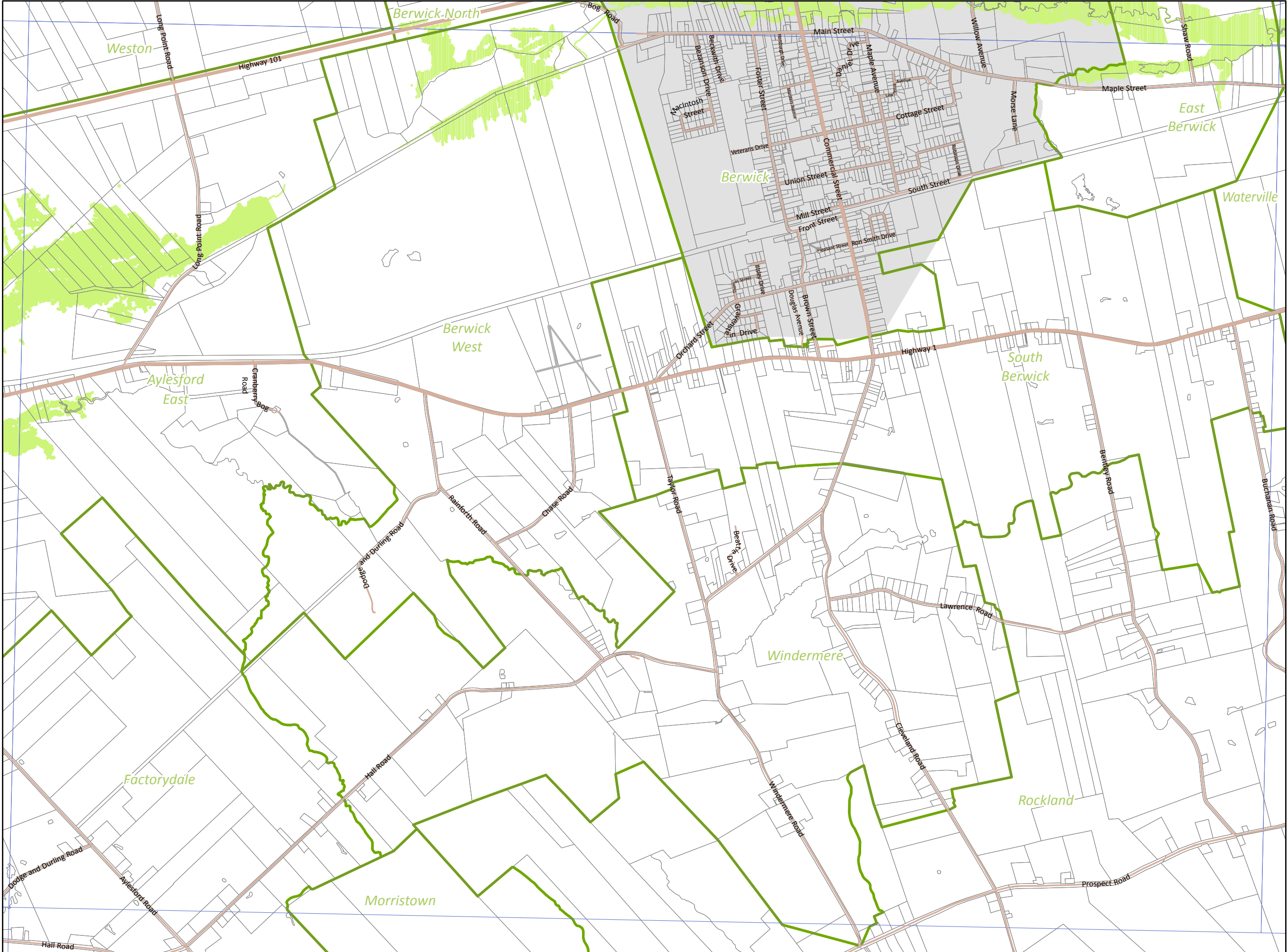
Legend

- Highway
- Major / Minor Road
- Airstrip
- Map Index
- General Service Area (911) Boundary
- Floodplain Surge
- Federal Land or Town



Source: 1:10,000 digital planimetric files, NS Property Records Database - Service Nova Scotia.
All other data was developed by the Municipality of the County of Kings, it's stakeholders or external partners unless otherwise indicated.
July 2013.





Kings County Floodplain Surge Risk Areas

Map 18

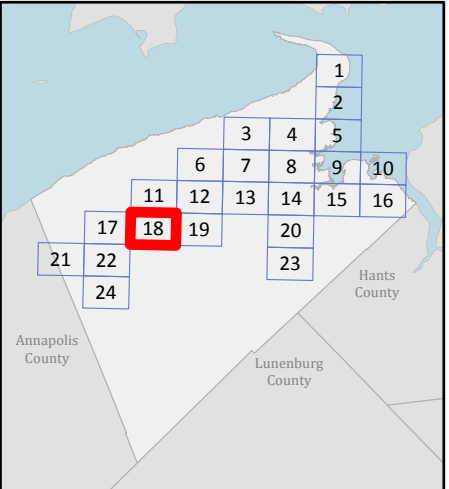
Legend

- Highway
- Major / Minor Road
- Airstrip
- Map Index
- General Service Area (911) Boundary
- Floodplain Surge
- Federal Land or Town

0.5 0.25 0 0.5
Kilometres

Source: 1:10,000 digital planimetric files, NS Property Records Database - Service Nova Scotia.
All other data was developed by the Municipality of the County of Kings, it's stakeholders or external partners unless otherwise indicated.
July 2013.

Page 18 of 24

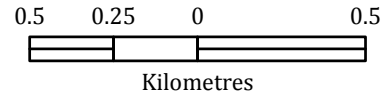
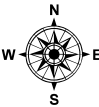


Kings County Floodplain Surge Risk Areas

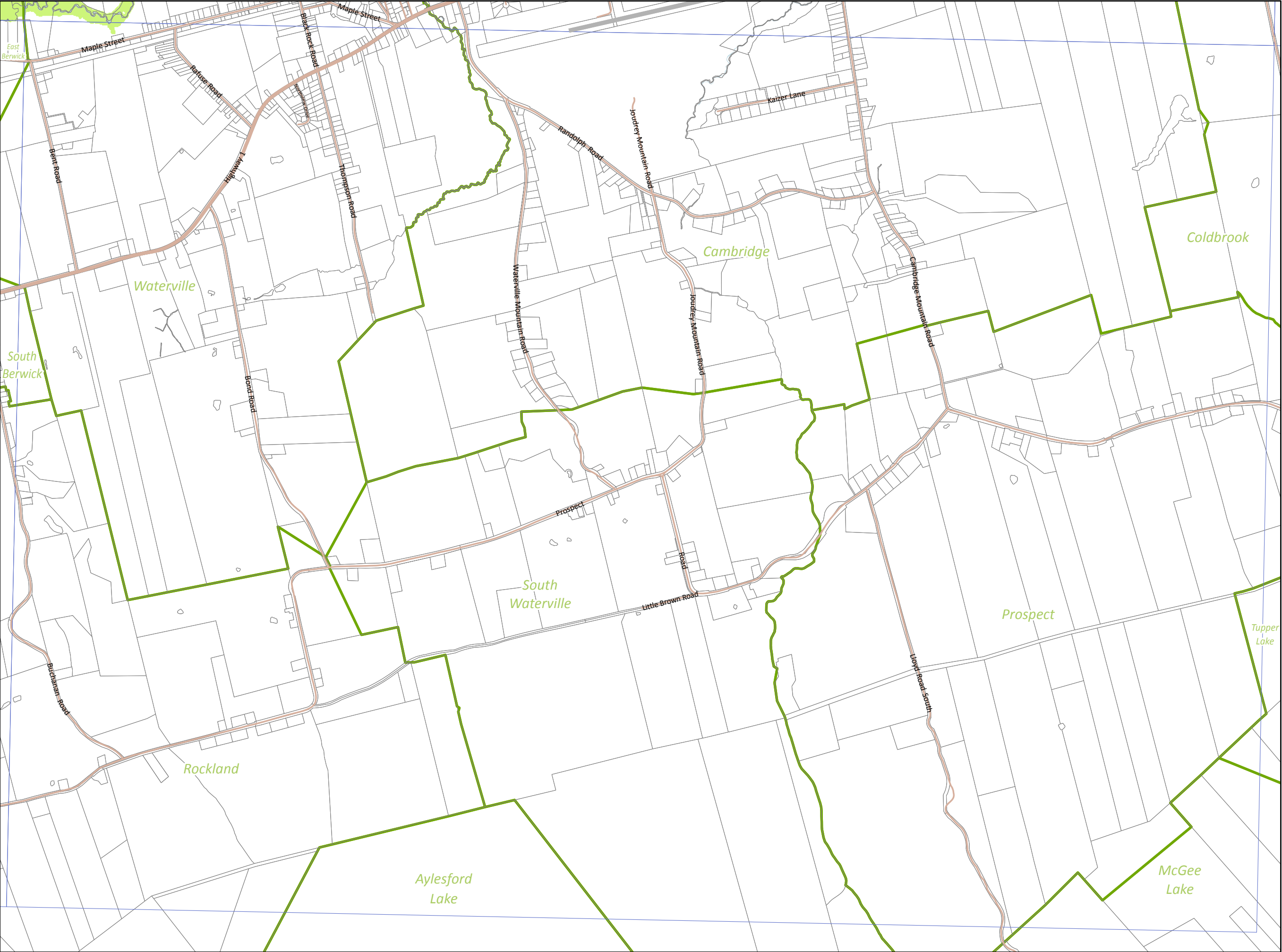
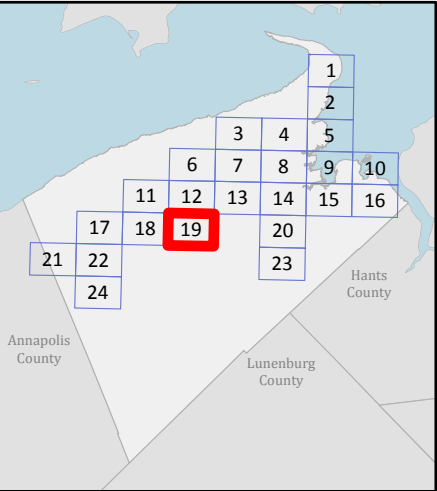
Map 19

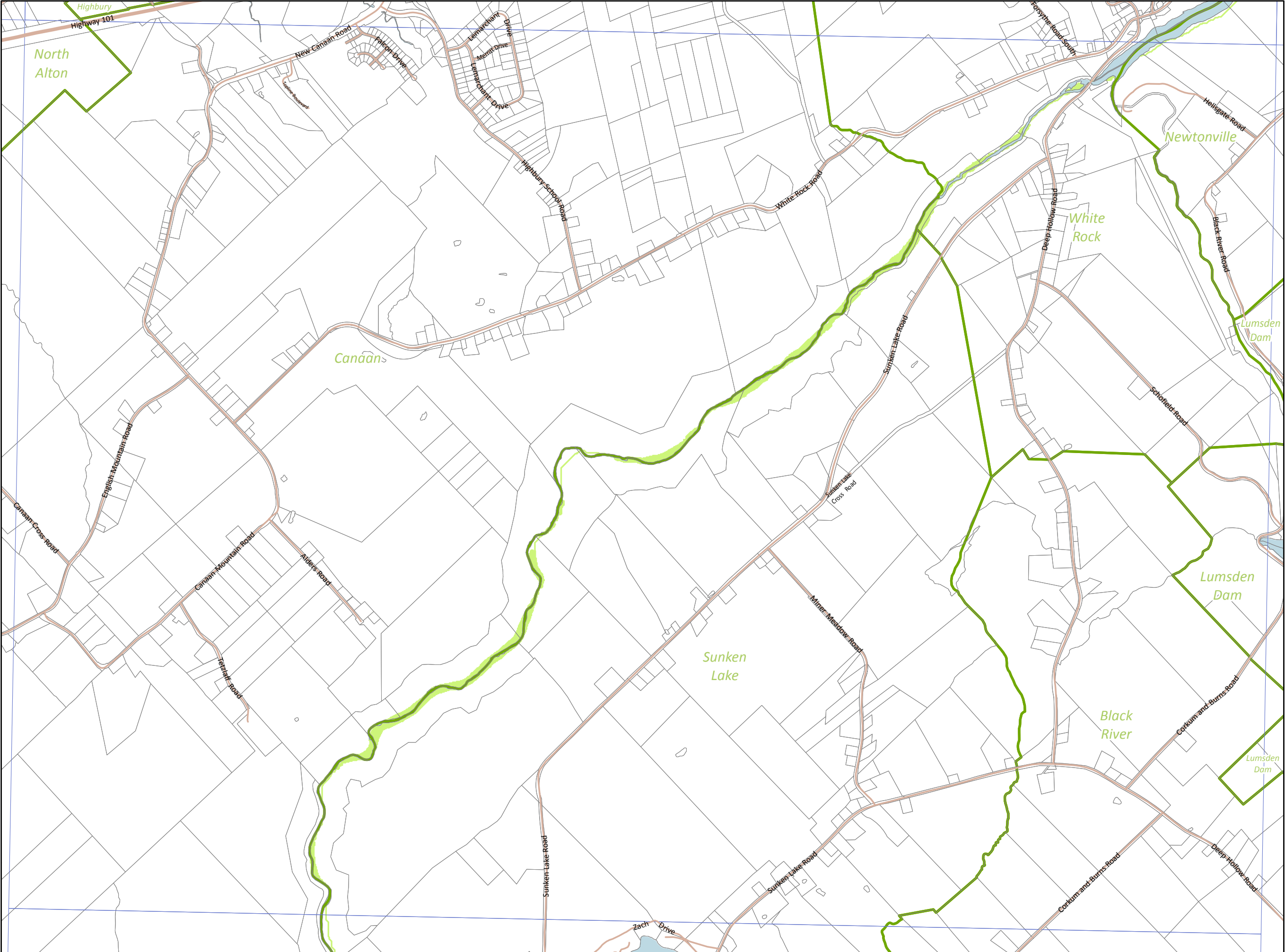
Legend

- Highway
- Major / Minor Road
- Airstrip
- Map Index
- General Service Area (911) Boundary
- Floodplain Surge
- Federal Land or Town



Source: 1:10,000 digital planimetric files, NS Property Records Database - Service Nova Scotia.
All other data was developed by the Municipality of the County of Kings, it's stakeholders or external partners unless otherwise indicated.
July 2013.





Kings County Floodplain Surge Risk Areas

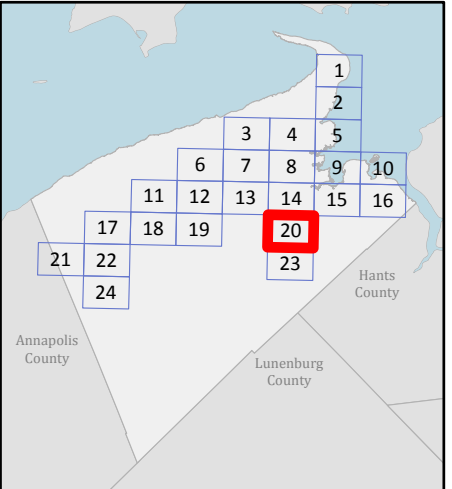
Map 20

Legend

- Highway
Major / Minor Road
- Airstrip
- Map Index
General Service Area (911) Boundary
- Floodplain Surge
- Federal Land or Town

Source: 1:10,000 digital planimetric files, NS Property Records Database - Service Nova Scotia.
All other data was developed by the Municipality of the County of Kings, it's stakeholders or external partners unless otherwise indicated.
July 2013.

Page 20 of 24

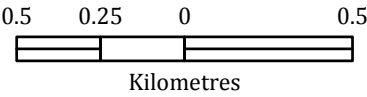
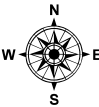


Kings County Floodplain Surge Risk Areas

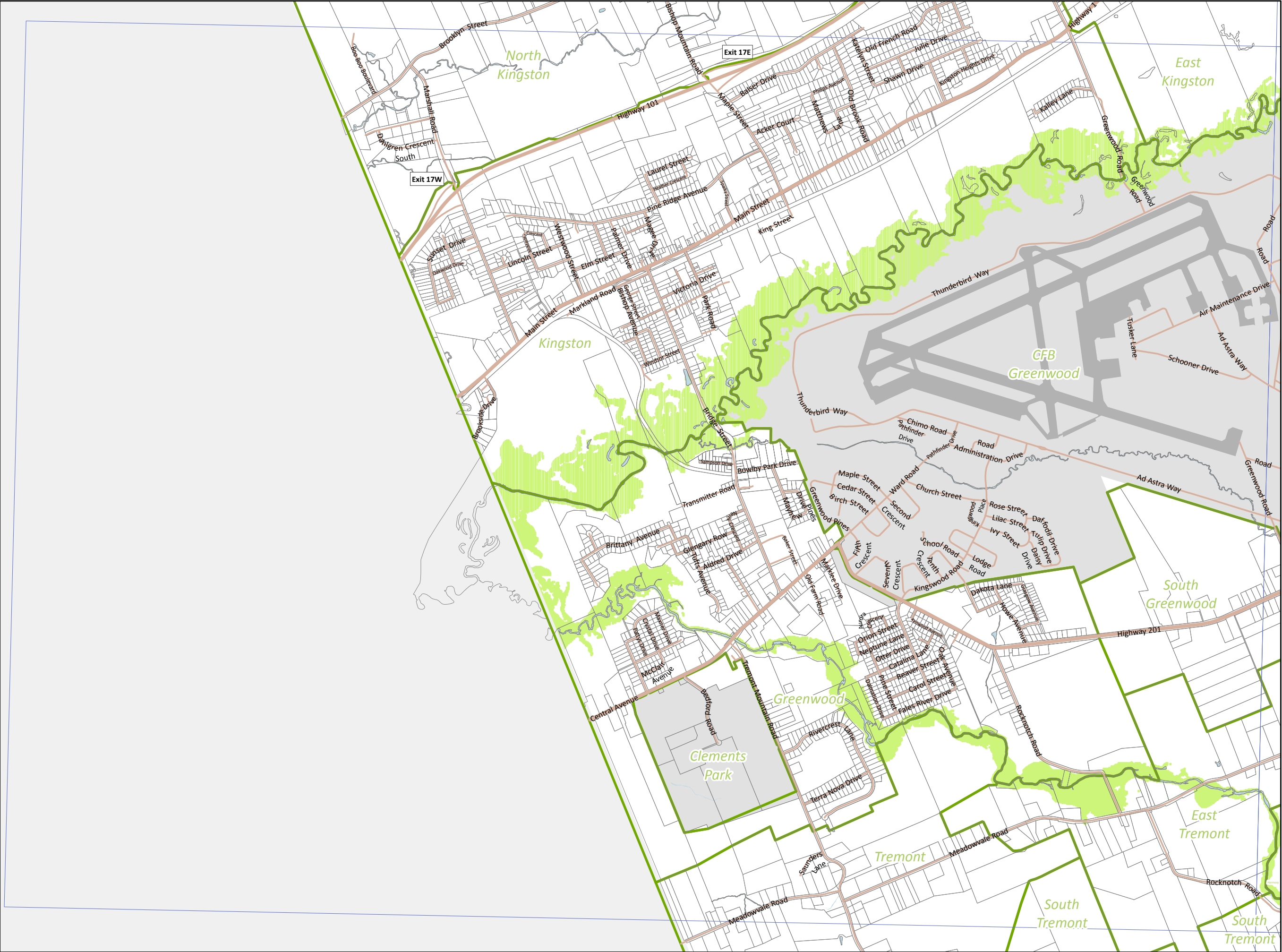
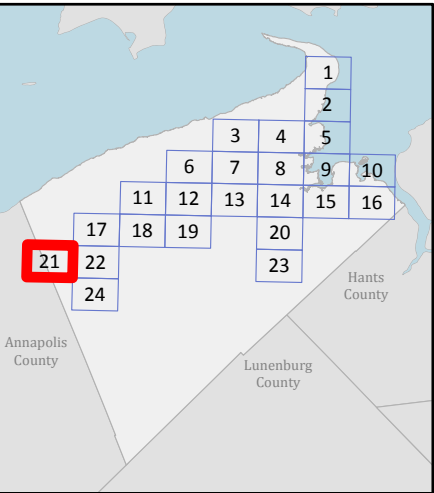
Map 21

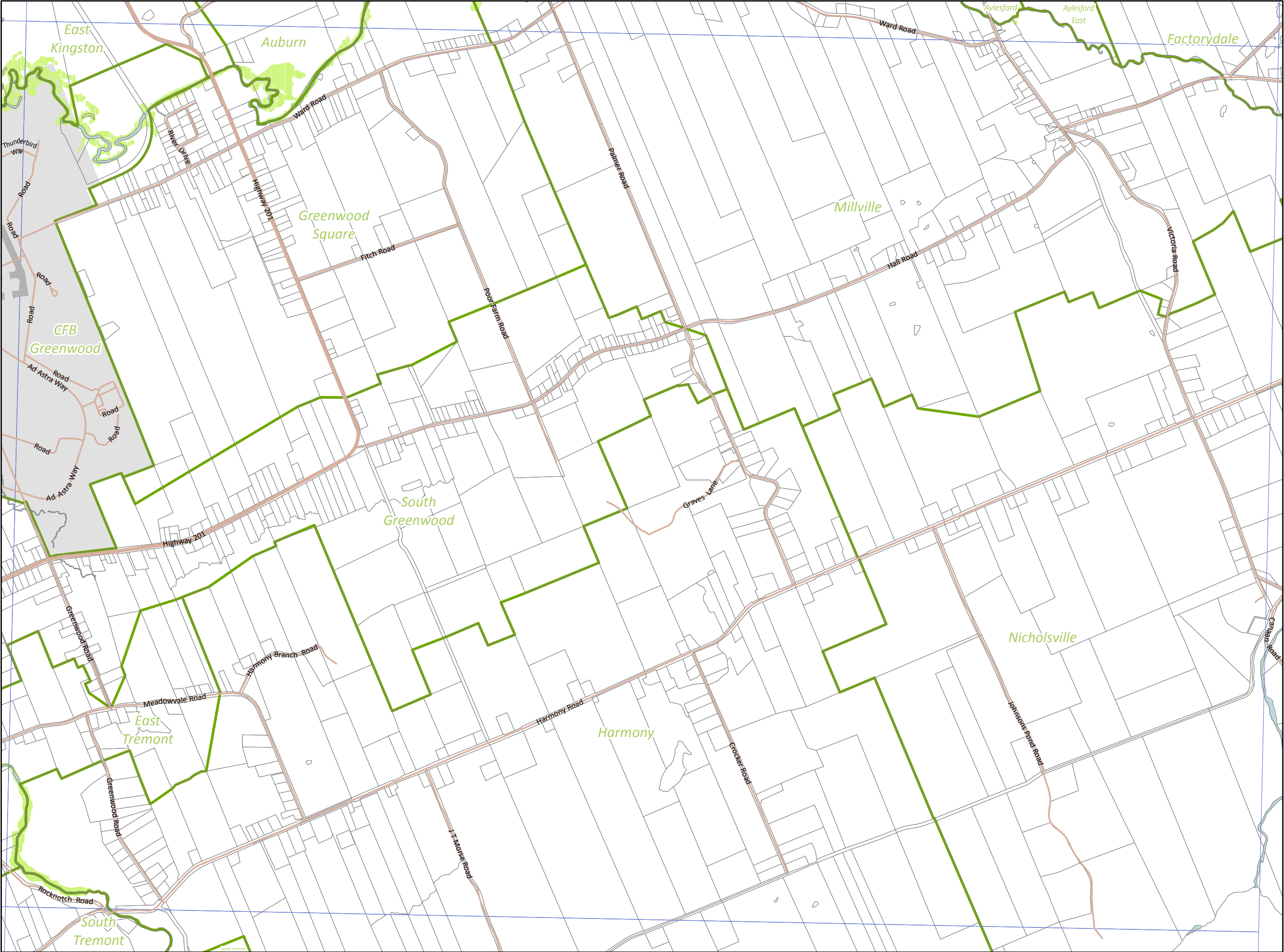
Legend

- Highway
- Major / Minor Road
- Airstrip
- Map Index
- General Service Area (911) Boundary
- Floodplain Surge
- Federal Land or Town



Source: 1:10,000 digital planimetric files, NS Property Records Database - Service Nova Scotia.
All other data was developed by the Municipality of the County of Kings, it's stakeholders or external partners unless otherwise indicated.
July 2013.





Kings County Floodplain Surge Risk Areas

Map 22

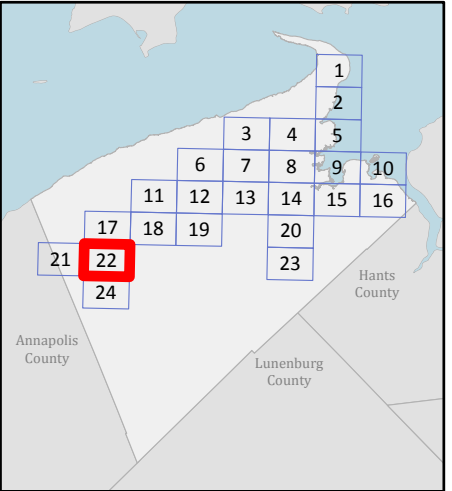
Legend

- Highway
- Major / Minor Road
- Airstrip
- Map Index
- General Service Area (911) Boundary
- Floodplain Surge
- Federal Land or Town

0.5 0.25 0 0.5
Kilometres

Source: 1:10,000 digital planimetric files, NS Property Records Database - Service Nova Scotia.
All other data was developed by the Municipality of the County of Kings, it's stakeholders or external partners unless otherwise indicated.
July 2013.

Page 22 of 24

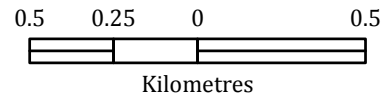
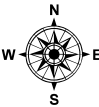


Kings County Floodplain Surge Risk Areas

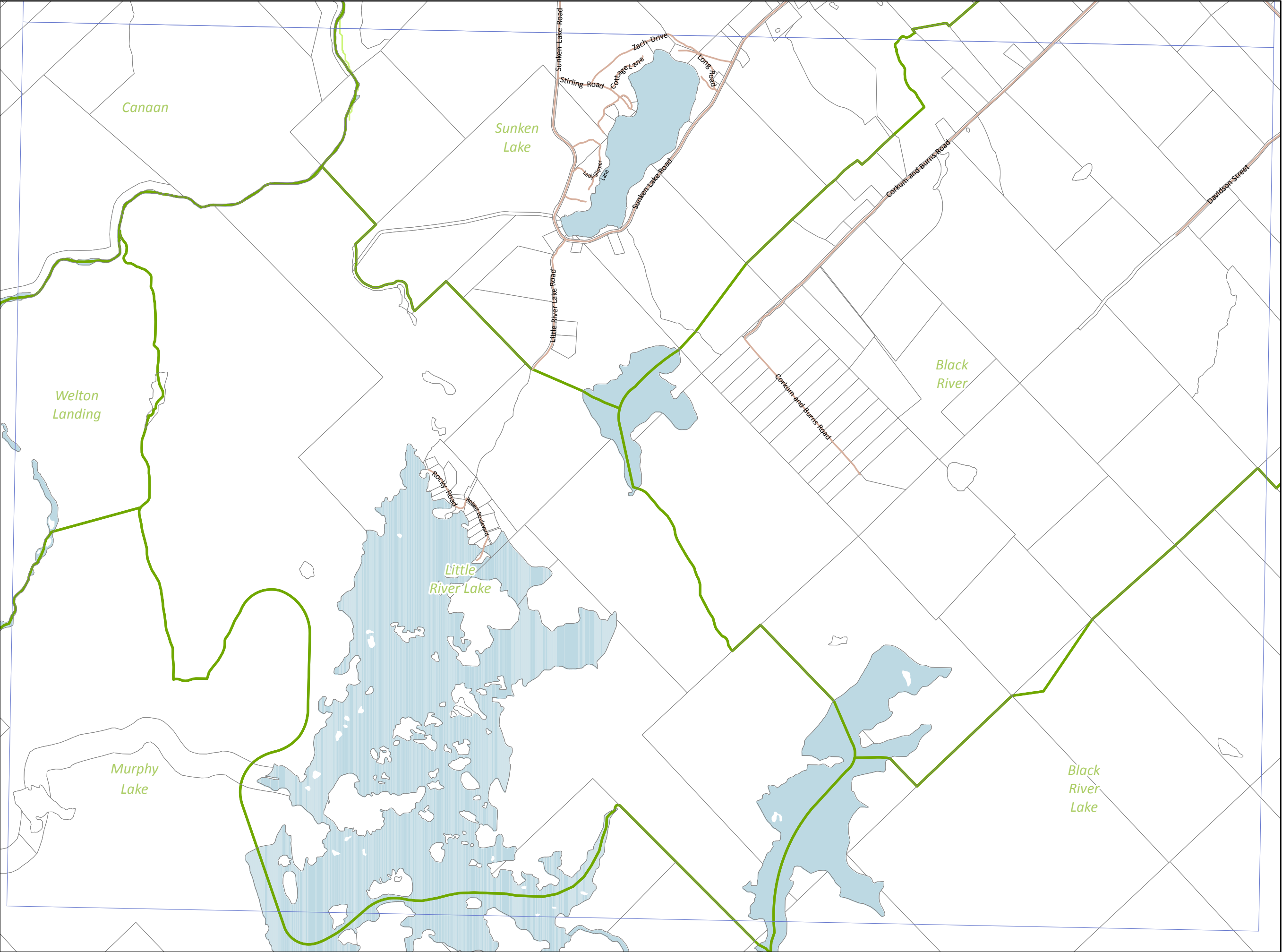
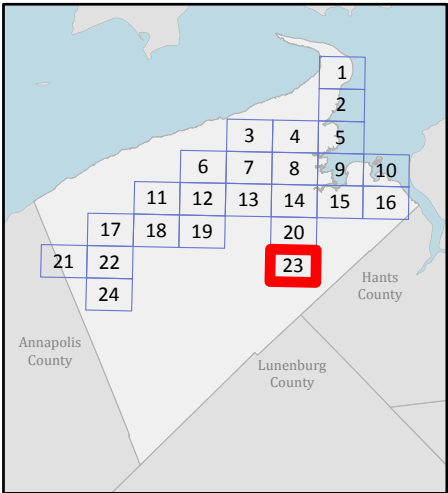
Map 23

Legend

- Highway
- Major / Minor Road
- Airstrip
- Map Index
- General Service Area (911) Boundary
- Floodplain Surge
- Federal Land or Town



Source: 1:10,000 digital planimetric files, NS Property Records Database - Service Nova Scotia.
All other data was developed by the Municipality of the County of Kings, it's stakeholders or external partners unless otherwise indicated.
July 2013.

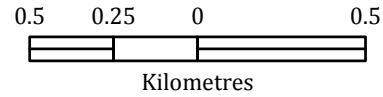
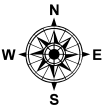


Kings County Floodplain Surge Risk Areas

Map 24

Legend

- Highway
- Major / Minor Road
- Airstrip
- Map Index
- General Service Area (911) Boundary
- Floodplain Surge
- Federal Land or Town



Source: 1:10,000 digital planimetric files, NS Property Records Database - Service Nova Scotia.
All other data was developed by the Municipality of the County of Kings, it's stakeholders or external partners unless otherwise indicated.
July 2013.

